

WPF
SUDOKU / PUZZLE
GRAND PRIX
2014

WPF PUZZLE GP 2014 SOLUTION BOOKLET

ROUND 3

Puzzle authors:
Japan

青木真一 Shinichi Aoki
稲葉直貴 Naoki Inaba
今井洋輔 Yousuke Imai
岡本広 Ko Okamoto

金子昌弘 Masahiro Kaneko
堅固政斗志 Masatoshi Kengo
酒井美奈子 Minako Sakai
武井大輔 Daisuke Takei

西尾徹也 Tetsuya Nishio
西山ゆかり Yukari Nishiyama
山本達也 Tatsuya Yamamoto

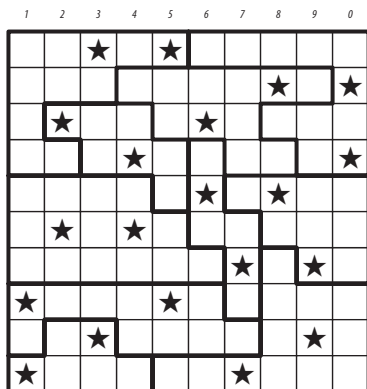
Organised by



WORLD PUZZLE FEDERATION



1. Star Battle



2. What's Next?

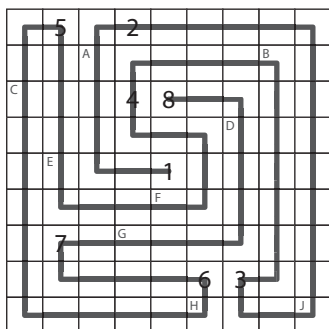
1, 4, 3, 11, 15, 13, 17, 24, **23**

ONE	THIRTEEN
FOUR	SEVENTEEN
THREE	TWENTYFOUR
ELEVEN	TWENTYTHREE
FIFTEEN	

SB, WN, NC, JS, AN, CM, JA, RCR, IN, S, B, **ID**

- | | |
|-------------------------|--------------------------|
| 1. Star Battle | 7. Japanese Arrows |
| 2. What's Next? | 8. Rain Clouds (Radar) |
| 3. Number Connection | 9. Islands (Nurikabe) |
| 4. Japanese Sums | 10. Skyscrapers |
| 5. Arukone (Numberlink) | 11. Battleships |
| 6. Cross Math | 12. Increasing Distances |

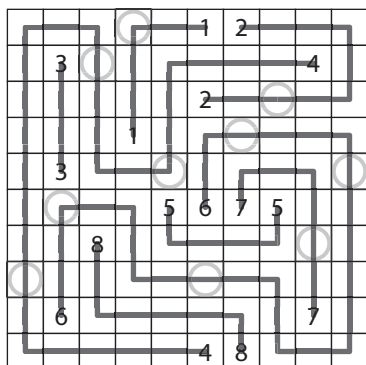
3. Number Connection



4. Japanese Sums

		1	4	5	3				
		13	12	14	8	15	23	3	
		12	7	14	12	15	6	13	
11	10	1	6	4		5	3	2	
2	8	10		2		8		9	1
4a →	18	8	6	4	8		7	1	
	7	23	7		6	4	8	2	3
	7	8				7		8	
4b →	8	16	5	8		9	1	6	5
	16	23	4	7	5		9	6	8

5. Arukone (Numberlink)

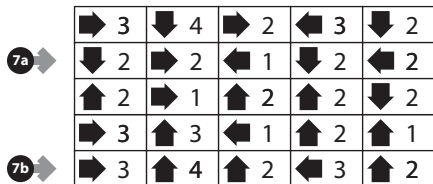


6. Cross Math

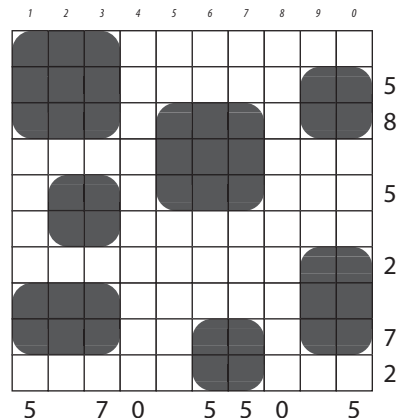
9	/	3	×	1	=	3
+		×		+		
7	/	2	×	8	=	28
+		/		-		
4	×	6	+	5	=	29
=		=		=		
20		1		4		



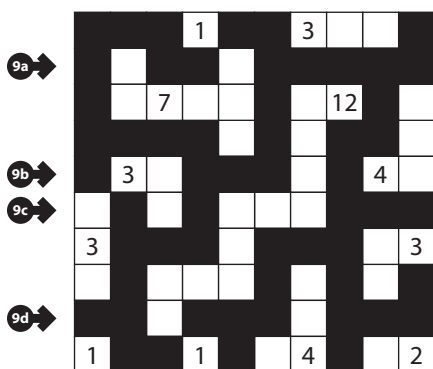
7. Japanese Arrows



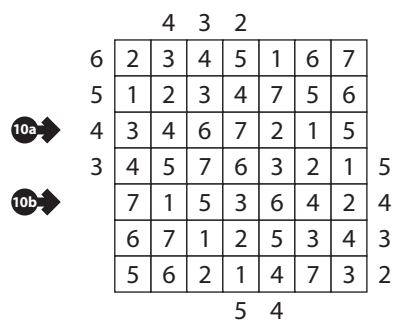
8. Rain Clouds (Radar)



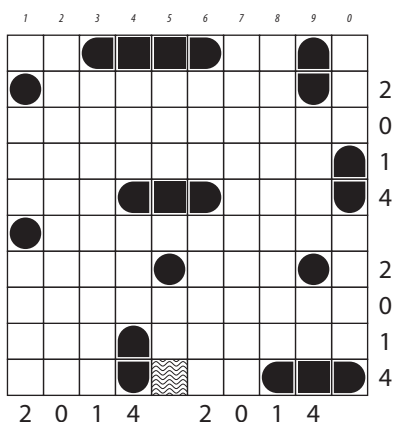
9. Islands (Nurikabe)



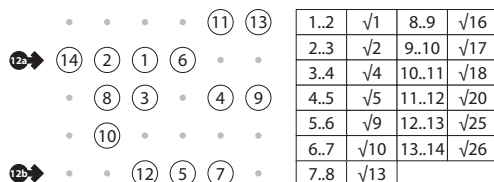
10. Skyscrapers



11. Battleships



12. Increasing Distances





13. Easy as ABC

	B	A		A		
C			C	B	A	
A				A	B	C
13a	B	A		C		C
13b	A	C				B
	C		B		A	
B		B	A		C	
						C
						C

14. Cross Sums (Kakuro)

			6	5	20				11	9
		7	1	4	2			6	5	1
		16	6	3	1	4	2	11	8	1
10		3	5	2	38	8	5	7	9	3
		16	7	9	21	4	5	1	3	6
		15	8	4	2	1	11	4	7	10
			4	1	3	12	5	1	4	2
		22	7	5	1	4	3	2	8	1
		16	1	3	2	5	8	4	7	1
23		1	3	2	5	8	4	16	1	4
		24	7	8	9	18	2	1	7	5
		17	8	9			23	6	9	8

15. Cave

		2			4		5
15a	3			5			
		3			5		
15b		6		6			4
				4		3	
15c	7						
		3				3	
				6			3
	4		4				2

16. Snake

	1	2	3	4	5	6	7
							4
							2
							5
							2
							5
	5	2		2	2	4	

17. Fences (Slitherlink)

		2	1	2		2	0	1
17a	2				1		2	3
	1	1	2		1			3
	3		1		2	3	1	
17b	2	1	2	3				
					2	3	3	
	2	0	1		2			2
	1		2		3		1	3
17c	1			3		0	2	1
		2	3	1		2		

18. Afternoon Skyscrapers

	6	5	4	3	2	1	7
18a	5	1	3	2	7	4	6
18b	4	7	2	1	6	3	5
	3	6	1	7	5	2	4
	2	4	5	6	1	7	3
18c	1	3	7	5	4	6	2
	7	2	6	4	3	5	1



19. Count Number

19a →	3	2	1	8	9	1	2	3	4	3
	4	5	6	7	4	3	6	1	5	2
	2	1	2	1	5	2	5	2	6	1
	3	4	3	4	9	1	4	3	5	4
19b →	1	6	5	7	8	3	2	7	6	3
	2	3	4	6	5	4	1	8	1	2
	4	5	8	2	1	8	9	7	6	5
	3	6	7	3	4	7	2	1	3	4
19c →	2	1	2	1	5	6	3	4	2	1
	7	6	5	4	3	2	1	5	6	7

20. Box of 2 or 3

