



1 Classic Sudoku [15 points]

Place a number from 1-9 in each empty cell in the grid such that each row, column and marked 3×3 box contains each number exactly once.

1A →

1B →

				4	8	6	9	
3					1	4		
4	2							
5	8							
1				7				8
							2	3
							7	6
		9	8					5
	7	1	4	2				

2 Classic Sudoku [20 points]

Place a number from 1-9 in each empty cell in the grid such that each row, column and marked 3×3 box contains each number exactly once.

2A →

2B →

1		9				4		8
	7				4		3	
3		4		9		2		6
			5				9	
		1		4		3		
	5				6			
7		6		5		8		2
	2		7				6	
9		8				5		7



3 Classic Sudoku [26 points]

Place a number from 1-9 in each empty cell in the grid such that each row, column and marked 3×3 box contains each number exactly once.

3A →

								4
	1	2					3	
8			3			2		
7			4		6			
	6	5		9		7	8	
			2		5			9
		7			4			1
	5					3	2	
6								

3B →

4 Classic Sudoku [30 points]

Place a number from 1-9 in each empty cell in the grid such that each row, column and marked 3×3 box contains each number exactly once.

4A →

5				8				2
	6		7	9			3	
	7		1		2		6	
6								4
	8		3		4		5	
	1			2	3		7	
9				1				8

4B →



5 Classic Sudoku [32 points]

Place a number from 1-9 in each empty cell in the grid such that each row, column and marked 3×3 box contains each number exactly once.

5A →

5B →

		1				4		
	2			1			5	
3			2		5			6
		3		6		9		
	4		7		8		3	
		8		4		2		
7			1		4			2
	8			3			4	
		9				1		

6 Diagonal Sudoku [83 points]

Apply classic sudoku rules.

Each marked diagonal must also contain each number from 1-9 exactly once.

6A →

6B →

				9				
		8		6		5		
	9		5		2		8	
		1		4		9		
7	4		6		9		2	3
		9		2		4		
	1		9		8		4	
		6		1		8		
				5				



7 Irregular Sudoku [45 points]

Place a number from 1-9 in each empty cell in the grid such that each row, column and marked 9-cell region contains each number exactly once.

7A →

7B →

1				8	2			6
	2						9	
		3				8		
			4		7			
8				5				1
			3		6			
		2				7		
	1						8	
4			8	1				9

8 Arrow Sudoku [37 points]

Apply classic sudoku rules.

A number placed in a cell with a circle must be the sum of the numbers placed in cells the adjoining arrow passes through. Numbers may repeat on arrows.

8A →

8B →

			6	↑	9			
		7				6		
	5			○			7	
3			○		○			5
			←	○	→			
	1		○		○			4
	7			○			6	
		9				4		
			5	↓	7			



9 Little Killer Sudoku [60 points]

Apply classic sudoku rules.

The clues outside the grid indicate the sum of the numbers contained in the cells in the direction of the corresponding arrow.

A 9x9 grid for Little Killer Sudoku. The grid contains the following numbers in the following cells:

	7			8			4	
	9			5			1	
	6			7			3	

Clues and arrows:

- Top row: 2 (row 1, col 1), 12 (row 1, col 2), 12 (row 1, col 3), 23 (row 1, col 4), 21 (row 1, col 5), 46 (row 1, col 6)
- Right side: 6 (row 2, col 9), 10 (row 3, col 9), 17 (row 4, col 9), 20 (row 5, col 9), 17 (row 6, col 9), 34 (row 7, col 9)
- Bottom row: 20 (row 9, col 1), 26 (row 9, col 2), 18 (row 9, col 3), 16 (row 9, col 4), 11 (row 9, col 5), 4 (row 9, col 6)
- Left side: 27 (row 2, col 1), 36 (row 3, col 1), 12 (row 4, col 1), 17 (row 5, col 1), 9 (row 6, col 1), 7 (row 7, col 1)
- Special clues: 9A (row 3, col 1), 9B (row 5, col 1)

10 Thermo Sudoku [50 points]

Apply classic sudoku rules.

Starting at the "bulb," numbers placed along each marked thermometer must form a strictly increasing sequence.

A 9x9 grid for Thermo Sudoku. The grid contains the following numbers in the following cells:

						8		
7				3		4		
		9		4				
				9		7		
	8		2					4
		7						

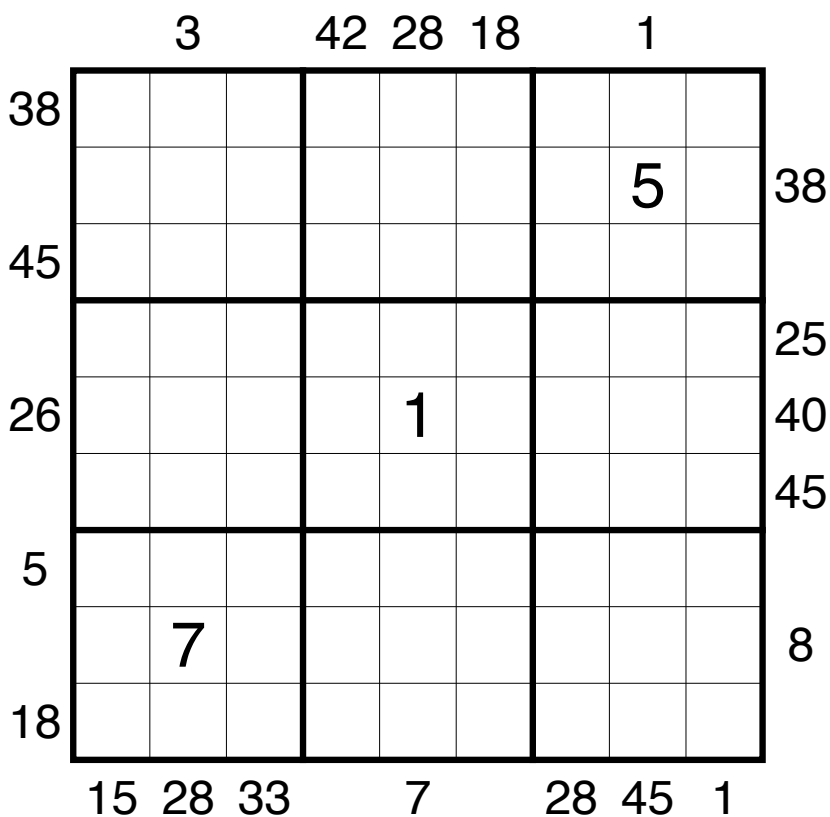
Thermometers (shaded lines) and bulbs (grey circles) are placed on the grid. Special clues 10A and 10B point to the start of thermometers in row 4 and row 8 respectively.



11 X-Sums Sudoku [48 points]

Apply classic sudoku rules.

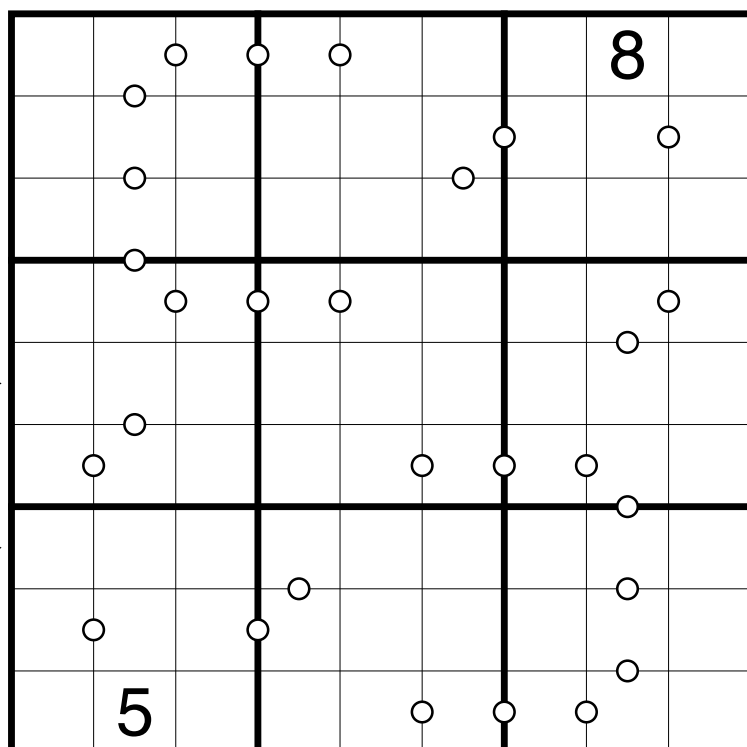
The clues outside the grid indicate the sum of the first X numbers placed in the corresponding direction, where X is equal to the first number placed in that direction.



12 Consecutive Pairs Sudoku [48 points]

Apply classic sudoku rules.

The numbers placed in marked adjacent cells must be consecutive. Not all such pairs of cells are marked.





13 Full or Half Sudoku [66 points]

Apply classic sudoku rules.

A circle marked at the intersection of a 2×2 block of cells indicates that numbers placed in these cells are either all odd or all even. A square marked at the intersection of a 2×2 block of cells indicates that exactly two numbers placed in these cells are odd, and exactly two numbers are even.

13A →

13B →

9	3			2	5	7	
		4					
			5				
	3	5					
	6	9			3	2	
				9	7		
			9				
					4		
	9	2	4			3	7

14 X-One Sudoku [40 points]

Apply classic sudoku rules.

The number placed in a circled cell must appear exactly once on each of the two marked diagonals passing through that cell.

14A →

14B →

	8	2				9	1	
7	5			9			4	6
3								7
				7				
	6		3	8	2		7	
				6				
5								4
6	1			4			8	5
	7	4				3	9	