

1 Classic Sudoku [17 points]

Place a digit from 1-9 in each empty cell in the grid such that each row, column and marked 3x3 box contains each digit exactly once.

1A →

1B →

| | | | | | | | | |
|---|---|---|---|---|---|---|---|---|
| 1 | | | | | | | | 9 |
| | | 5 | 7 | | 4 | 3 | | |
| | 8 | | | 5 | | | 2 | |
| | 6 | | | 8 | | | 7 | |
| | | 9 | 3 | | 6 | 8 | | |
| | 4 | | | 7 | | | 9 | |
| | 2 | | | 3 | | | 5 | |
| | | 4 | 8 | | 7 | 9 | | |
| 7 | | | | | | | | 6 |

2 Classic Sudoku [18 points]

Place a digit from 1-9 in each empty cell in the grid such that each row, column and marked 3x3 box contains each digit exactly once.

2A →

2B →

| | | | | | | | | |
|---|---|---|---|---|---|---|---|---|
| 8 | | | | | 2 | 9 | | |
| | | | 9 | | 1 | | | 7 |
| | 7 | | 5 | | | 8 | | |
| | | | | | | | 4 | 3 |
| | 2 | | | 9 | | | | |
| | | | 6 | | 7 | | | |
| | | 8 | | | 6 | | | |
| | 5 | 7 | | | 8 | 1 | | 2 |
| | | 1 | 2 | 5 | | 3 | | |

3 Classic Sudoku [27 points]

Place a digit from 1-9 in each empty cell in the grid such that each row, column and marked 3x3 box contains each digit exactly once.

3A →

| | | | | | | | | |
|---|---|---|---|---|---|---|---|---|
| 5 | | | | | | | | 4 |
| | | 2 | 1 | | 8 | 3 | | |
| | 8 | | | 6 | | | 2 | |
| | 4 | | | 9 | | | 3 | |
| | | 3 | 5 | | 7 | 4 | | |
| | 1 | | | 2 | | | 9 | |
| | 5 | | | 8 | | | 7 | |
| | | 7 | 6 | | 1 | 8 | | |
| 6 | | | | | | | | 3 |

3B →

4 Classic Sudoku [48 points]

Place a digit from 1-9 in each empty cell in the grid such that each row, column and marked 3x3 box contains each digit exactly once.

4A →

| | | | | | | | | |
|---|---|---|---|---|---|---|---|---|
| | | 5 | | | | 4 | | |
| 8 | 2 | | | 6 | | | 9 | 5 |
| | | | 5 | 7 | 8 | | | |
| 5 | 1 | | | | | | 7 | 6 |
| | | | | 3 | | | | |
| | | | 6 | | 9 | | | |
| | | | | 1 | | | | |
| 3 | 7 | | | | | | 6 | 4 |
| 4 | | 8 | | | | 1 | | 9 |

4B →

5 Classic Sudoku [34 points]

Place a digit from 1-9 in each empty cell in the grid such that each row, column and marked 3x3 box contains each digit exactly once.

5A →

5B →

| | | | | | | | | |
|---|---|---|---|---|---|---|---|---|
| 8 | | | | | | | | 7 |
| | | 5 | 4 | | 2 | 9 | | |
| | 3 | | | 1 | | | 8 | |
| | 6 | | | 2 | | | 9 | |
| | | 9 | 6 | | 3 | 1 | | |
| | 1 | | | 7 | | | 6 | |
| | 8 | | | 9 | | | 5 | |
| | | 3 | 8 | | 6 | 2 | | |
| 5 | | | | | | | | 9 |

6 Diagonal Sudoku [32 points]

Apply classic sudoku rules. Each marked diagonal must also contain each digit from 1-9 exactly once.

6A →

6B →

| | | | | | | | | |
|---|---|---|--|--|---|---|---|--|
| | | | | | | 7 | | |
| 1 | 4 | | | | | | | |
| 3 | | 7 | | | | | | |
| 5 | | 2 | | | 3 | 4 | 1 | |
| 7 | | 4 | | | 5 | | | |
| 9 | 6 | | | | 2 | 8 | 5 | |
| | | | | | | | 9 | |
| | | | | | 6 | 1 | 3 | |
| | 5 | | | | | | | |

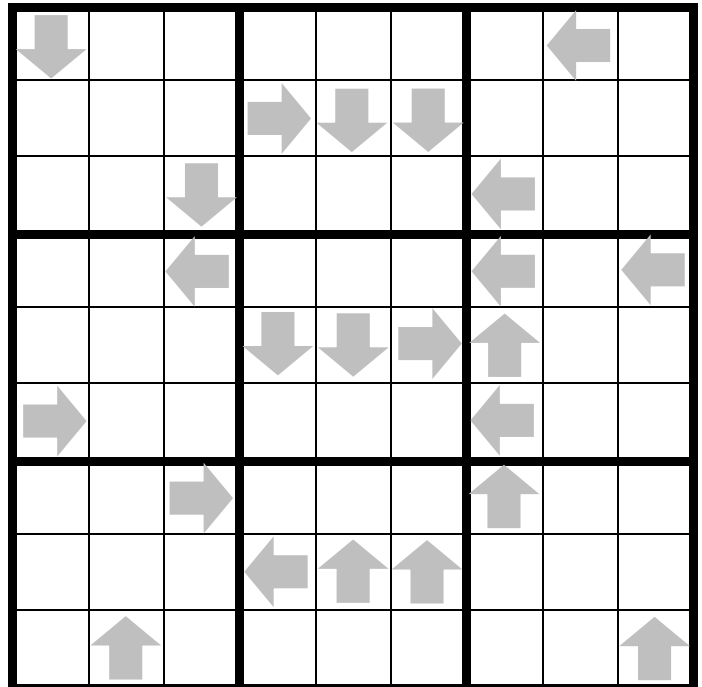
7 Search Nine Sudoku

[40 points]

Apply classic sudoku rules. Some arrows are marked in the grid. Each arrow points to the digit 9 in the respective row or column. The digit in the cell with the arrow is the distance from this cell to the corresponding digit 9.

7A →

7B →

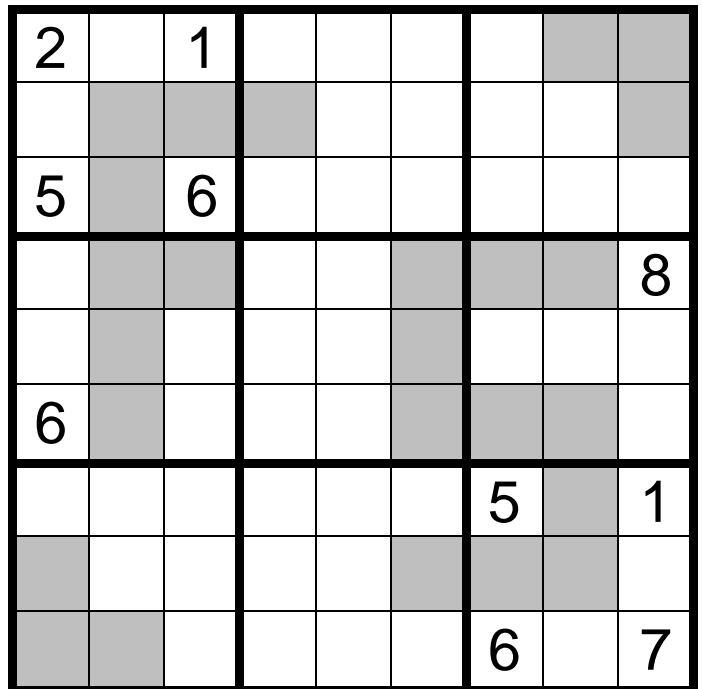


8 Fortress Sudoku [50 points]

Apply classic sudoku rules. A digit placed in a shaded cell must be strictly greater than digits placed in adjacent unshaded cells.

8A →

8B →



9 Thermo Sudoku [58 points]

Apply classic sudoku rules. Starting at the "bulb", digits placed along each marked thermometer must form a strictly increasing sequence.

9A →

| | | | | | | | | |
|---|--|--|--|---|--|--|--|---|
| | | | | | | | | |
| 6 | | | | 1 | | | | 9 |
| 5 | | | | 3 | | | | |
| | | | | 9 | | | | 4 |
| 7 | | | | 6 | | | | 2 |
| | | | | | | | | |
| | | | | | | | | |

9B →

10 Cloned Shapes Sudoku [84 points]

Apply classic sudoku rules. Each shape is cloned, including the digits it contains, without rotating or mirroring. The position of the digits inside each shape is fixed - the same digits have to be placed at the same positions inside the identical shapes. The digit may appear more than once in a shape.

10A →

| | | | | | | | | |
|---|--|---|--|---|--|---|--|---|
| 3 | | | | | | 1 | | |
| | | | | 8 | | 6 | | |
| | | 5 | | 3 | | | | 9 |
| 6 | | | | | | | | |
| | | | | | | | | 4 |
| 2 | | | | 7 | | 4 | | |
| | | 1 | | 2 | | | | |
| | | 3 | | | | | | 5 |

10B →

11 Perfect Squares Sudoku

[48 points]

Apply classic sudoku rules. If two horizontally or vertically adjacent cells (read from left to right and from top to bottom) form a two-digit perfect square, it is marked by a gray square. All two-digit perfect squares are marked.

11A →

11B →

| | | | | | | | |
|---|---|---|---|---|--|---|---|
| 1 | | | | | | | 4 |
| | 2 | | | | | | |
| | | 7 | | 9 | | | |
| | | | | | | | |
| | | | | | | | |
| | | | 4 | | | 3 | |
| | | | | | | | |
| | 7 | | | | | | 8 |

12 Double Kropki Sudoku

[64 points]

Apply classic sudoku rules. Adjacent cells containing numbers whose difference is 2 are marked with a white rhombus. Adjacent cells containing numbers whose ratio is 4 are marked with a black rhombus. Adjacent cells with no marking must not contain numbers either whose difference is 2 or whose ratio is 4.

12A →

12B →

| | | | | | | | |
|--|--|--|--|--|--|--|--|
| | | | | | | | |
| | | | | | | | |
| | | | | | | | |
| | | | | | | | |
| | | | | | | | |
| | | | | | | | |
| | | | | | | | |
| | | | | | | | |

