

# WPF PUZZLE GP 2022 SOLUTION BOOKLET

1. Letter Weights [Rakesh Rai] (35 points)

➔ 

A	D	G	I	N	O	P	R	X
2	6	8	5	1	7	4	3	9

2. Criss-Cross [Rakesh Rai] (10 points)

F	L	U		E	R
I		P	A		I
N	O		T	O	P
	H	I			I
L		N			L
S	U	N			K

➔ I L N T E K

3-4. Scrabble [Rakesh Rai] (46, 75 points)

➔

		T							
S	E	H	N	S	U	C	H	T	
C	A		T		O			R	
H	L		R		D			O	
W	A		I		D			U	
E	S		K		I			V	
L	S		H		W			A	
L	O		E		O			I	
E	P		D		M			L	
N	H		O		P			L	
A	I		N		L			E	
N	L		I		T			E	
G	E		A					A	
S								G	
T	R		I		C		K	S	
			T		E			R	

➔

5-7. Yajilin [Prasanna Seshadri] (12, 25, 56 points)

➔

	1	2	3	4	5	6	7	8	9	0
7										
9										
2										
4										
3										
7										
1										
7										
0										
1										

➔

	1	2	3	4	5	6	7	8	9	0	1
1											
0											
2											
4											
2											
2											
0											
0											
1											
3											
7											
0											

➔

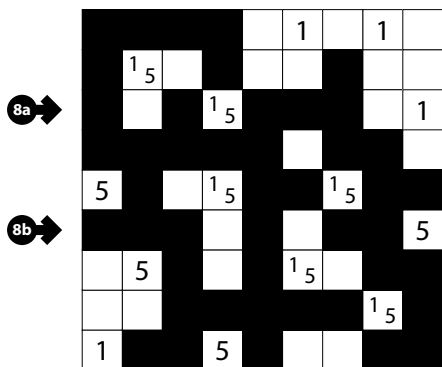
	1	2	3	4	5	6	7	8	9	0
0										
6										
1										
5										
9										
6										
3										
9										
3										
5										
2										
6										
1										
3										
6										
0										
3										
1										

➔

					Q				S	W	E	P	T	
B	A	D	P	U	F	S	H	A						
U	A	U	I	I	N	I	T	I	A	L				
Z	Z	Z	Z	Z	Z	Z	Z	Z	A					
Z	Z	Z	Z	Z	Z	Z	Z	Z	Z					
	L	L	I			L			Z					
C	L	E	M	E	N	C	Y	D	I	C	T	I	O	N
L	D			A	P	N							I	
O			W	A	L	K	I	N	G	A			C	
T			A	L	Z			F	L	O	C	K		
H	A	P	P	I	L	Y	Z			I				
			L			P	A	P	A	R	A	Z	Z	I

➔

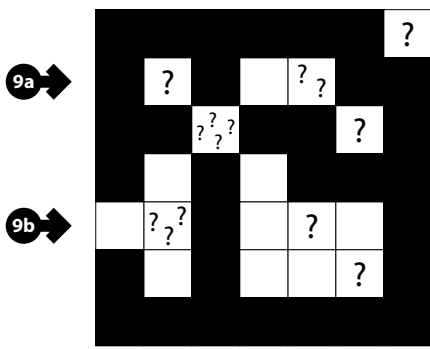
**8. Tapa [Swaroop Guggilam] (16 points)**



8a →

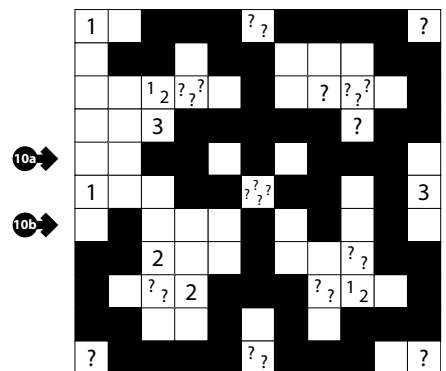
8b →

**9-11. Tapa (Unknowns) [Swaroop Guggilam] (4, 57, 50 points)**



9a →

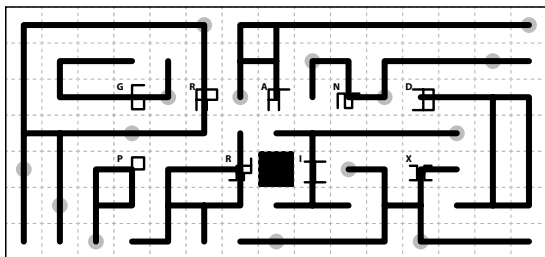
9b →



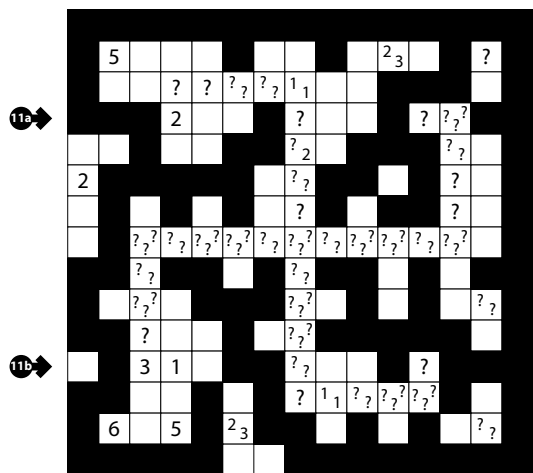
10a →

10b →

**12. Curve Data [Rakesh Rai] (72 points)**



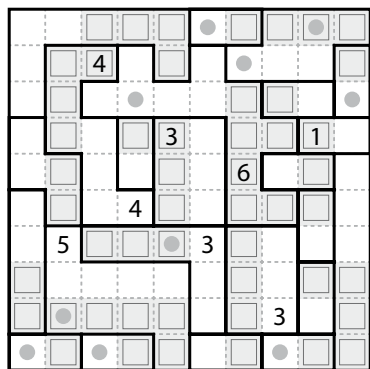
12 → R R P R G R A X N X N X I N A



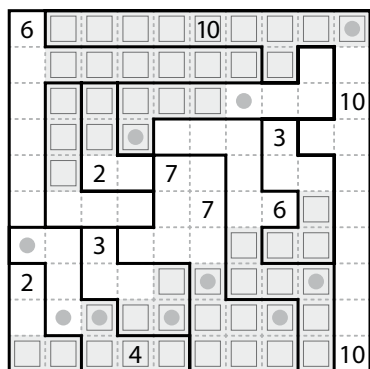
11a →

11b →

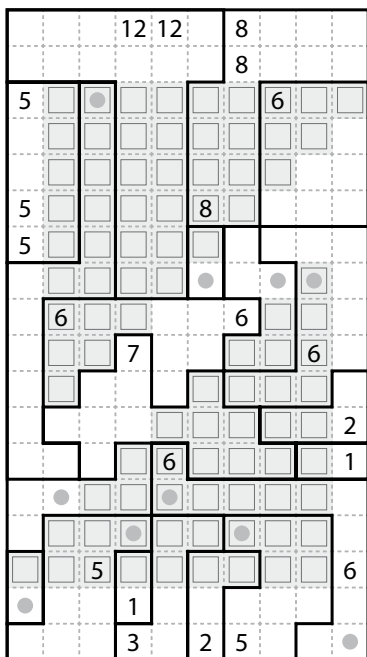
**13-15. Double Choco [Prasanna Seshadri] (31, 28, 72 points)**



13 → 1 5 1 6 3 1 3 1 3 1

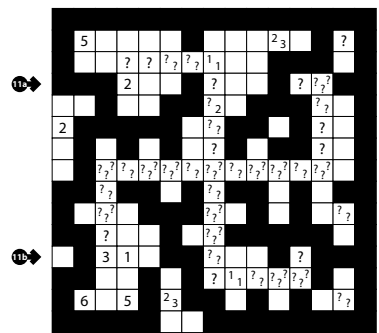


14 → 4 4 4 4 3 7 4 7 6 0



15 → 1 3 7 5 6 1 5 3 6 6

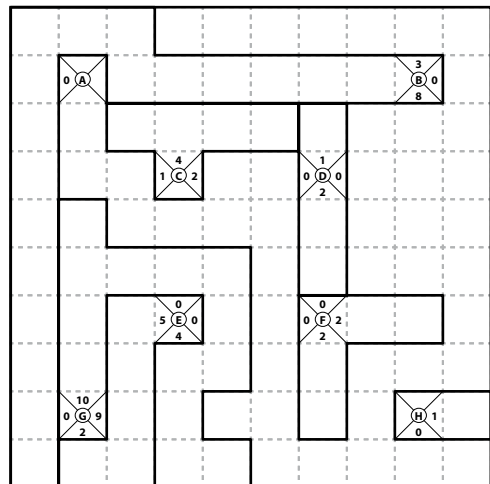
Note: Puzzle 11 has an alternate solution, displayed to the right, but with the same answer key. This solution was discovered too late in the testing process to allow the competition puzzle to be changed.



11a →

11b →

**16. Compass [Rakesh Rai] (55 points)**



16a →

16b →