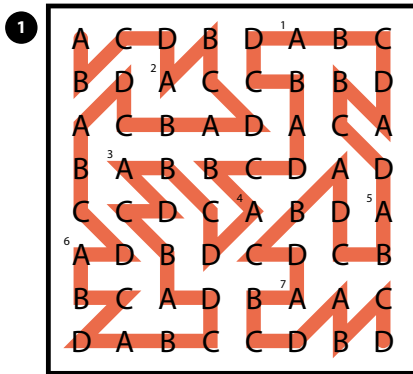


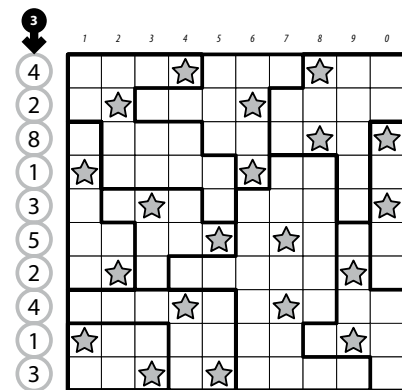
WPF PUZZLE GP 2023 SOLUTION BOOKLET

1. Password Path [Salih Alan] (26 points)

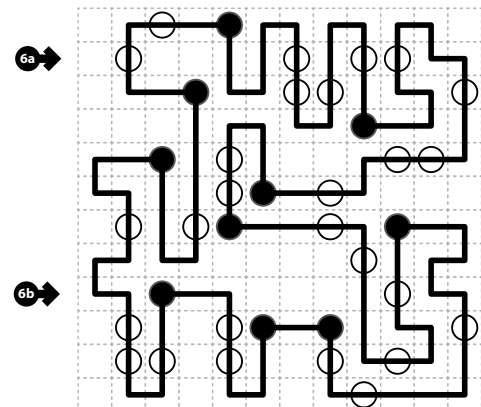


ABCD

3. Star Battle [Hatice Esra Aydemir] (17 points)



6. Masyu [Salih Alan] (36 points)



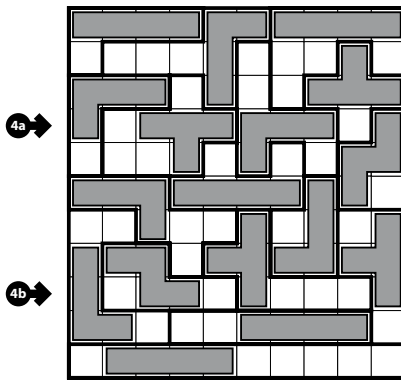
2. Letter Weights [Murat Can Tonta] (64 points)

	A	B	D	E	H	L	O	P	R	T	U
2 →	10	11	3	7	5	6	4	2	8	9	1

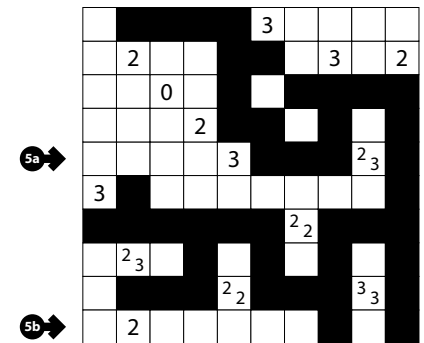
Numbers: 1 2 3 4 5 6 7 8 9 10 11

BLOB = 32
HEART = 39
LETTER = 46
PURPLE = 26
TADA = 32

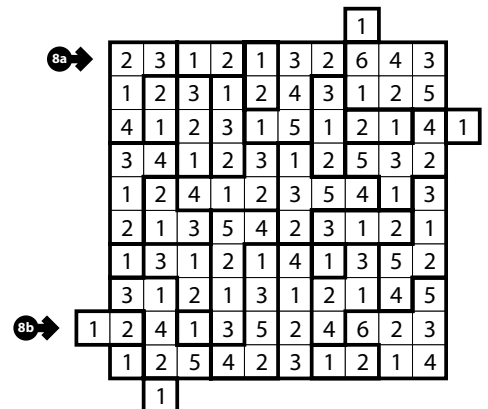
4. LITS [Hatice Esra Aydemir] (22 points)



5. Tapa [Hatice Esra Aydemir] (34 points)



8. Ripple Effect [Hatice Esra Aydemir] (50 points)



9. Skyscrapers [Murat Can Tonta] (40 points)

	2	3		2	3		
2	5	4	3	6	1	2	
3	4	3	5	2	6	1	
9a →	1	6	4	3	2	5	2
9b →	6	5	2	1	3	4	3
2	2	1	6	4	5	3	
3	3	2	1	5	4	6	
	2	3		2	3		

10. Square Jam [Murat Can Tonta] (22 points)

10 → 1 2 3 2 1 2 2 1 1 2

11. Heteromino [Murat Can Tonta] (15 points)

11 → I L I L I L I L L I

12. Maxi Loop [Hatice Esra Aydemir] (24 points)

12a →

12b →

13. Easy as Japanese Sums [Salih Alan] (46 points)

{1-4}	3	5					
13a →	3		4	1			2
	5	4	1		2		3
13b →	2	3	4	1			
	3		3		4	2	1
	2	2	3		1	4	5
	5	4	1	2	3		3
		3	5	3		5	

14. Kuromasu [Hatice Esra Aydemir] (40 points)

14 ↓

2

3

1

3

5

1

2

4

2

1

15. Range [Salih Alan] (40 points)

1	6	5	3	5	4	2	3
2	4	1	3	3	5	6	
3	4	2	4	6	5	1	3
2	3	1	2	4	4	6	5
6	1	5	5	3	3	5	4
4	3	6	3	5	1	2	1
2	5	3	4	2	6		1
5	2	3	6	1	1	3	4

15a →

15b →

16. Chocolate Banana [Murat Can Tonta] (51 points)

16 → 3 3 0 1 3 2 1 3 5 2

17. Pentomino (Blokus) [Murat Can Tonta] (57 points)

17a →

17b →