

1 Classic Sudoku**[20 points]**

Place a digit from 1-9 in each empty cell in the grid such that each row, column and marked 3x3 box contains each digit exactly once.

1A →**1B** →

	4	5				6	7	
8								3
2				3				5
			2		4			
		1				5		
			5		7			
1				6				8
9								7
	2	6				4	9	

2 Classic Sudoku**[27 points]**

Place a digit from 1-9 in each empty cell in the grid such that each row, column and marked 3x3 box contains each digit exactly once.

2A →**2B** →

7			1				4	
3		4		2				
			3				5	
						8		6
	4			8			7	
5		7						
	6				4			
				1		3		8
	5				2			9

3 Classic Sudoku

[30 points]

Place a digit from 1-9 in each empty cell in the grid such that each row, column and marked 3x3 box contains each digit exactly once.

3A →

3B →

2			3			7		8
4	5				2	3		
7	6				5	4		
		5	8				7	9
		1	6				9	2
9		2			7			5

4 Classic Sudoku

[57 points]

Place a digit from 1-9 in each empty cell in the grid such that each row, column and marked 3x3 box contains each digit exactly once.

4A →

4B →

		3			8			
	2		4			7		
1				5			6	
	8		6					5
		7					4	
6						3		
	7				2			8
		8		1			9	
			9			1		4

5 Non-Consecutive Sudoku
[25 points]

Apply classic sudoku rules.
Digits placed in adjacent
cells must not be
consecutive.

5A →

	6	2	9					
			6					
	8	3	1		9	2	6	
	4				6			
	2	7	3		4	1	5	
							9	
					3	7	2	

5B →

6 Three-Digit Numbers
Killer Sudoku

[34 points]

Apply classic sudoku rules.
Digits in the gray strings
represent three-digit
numbers. All three-digit
numbers in the cage must
sum to the total given in its
top-left corner. Digits must
not repeat in cages.

6A →

6B →

2025	3			8		2025	4	
6			9					8
						9		
			2025				8	
4				2				3
	6							
2025		8				2025		
3				4				9
	4			7			1	

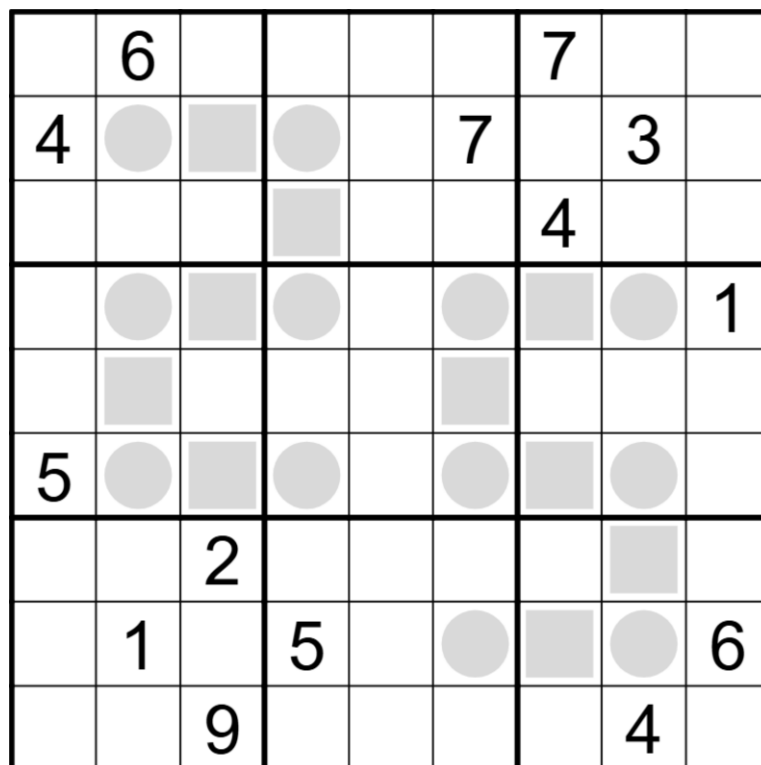
7 Odd/Even Sudoku

[35 points]

Apply classic sudoku rules.
Digits in circles must be odd
and digits in squares must
be even.

7A →

7B →



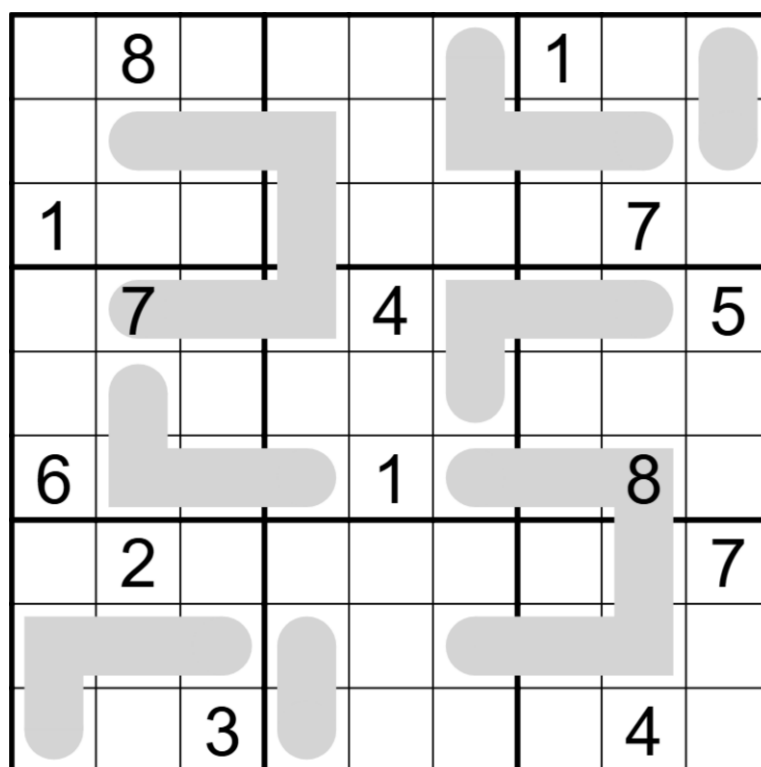
8 Renban Sudoku

[54 points]

Apply classic sudoku rules.
Shaded regions must
contain a set of distinct,
consecutive digits in any
order.

8A →

8B →



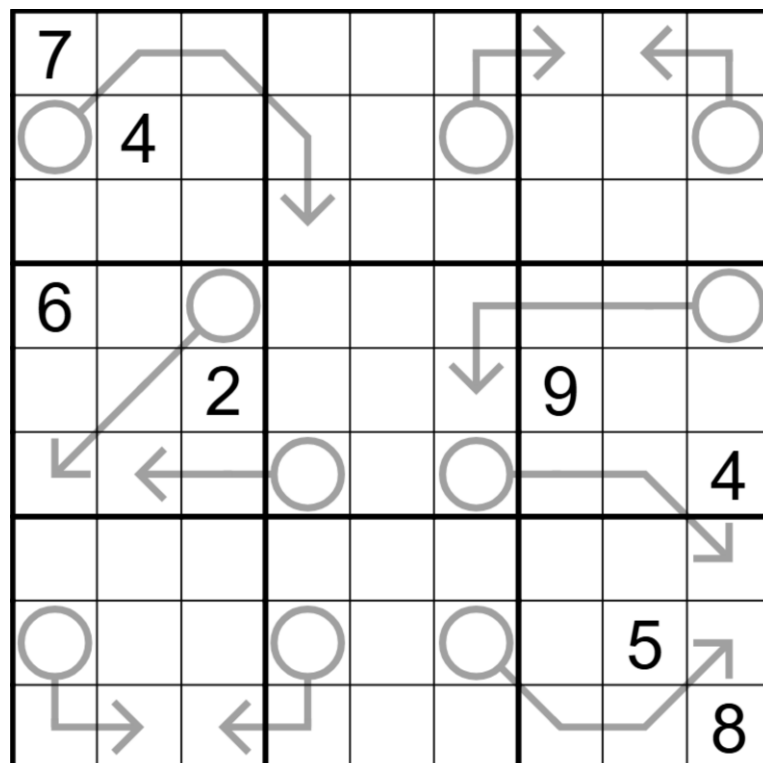
9 Arrow Sudoku

[56 points]

Apply classic sudoku rules. Each digit placed in a cell with a circle must be the sum of the digits placed in the cells that the adjoining arrow passes through. Digits may repeat on arrows.

9A →

9B →



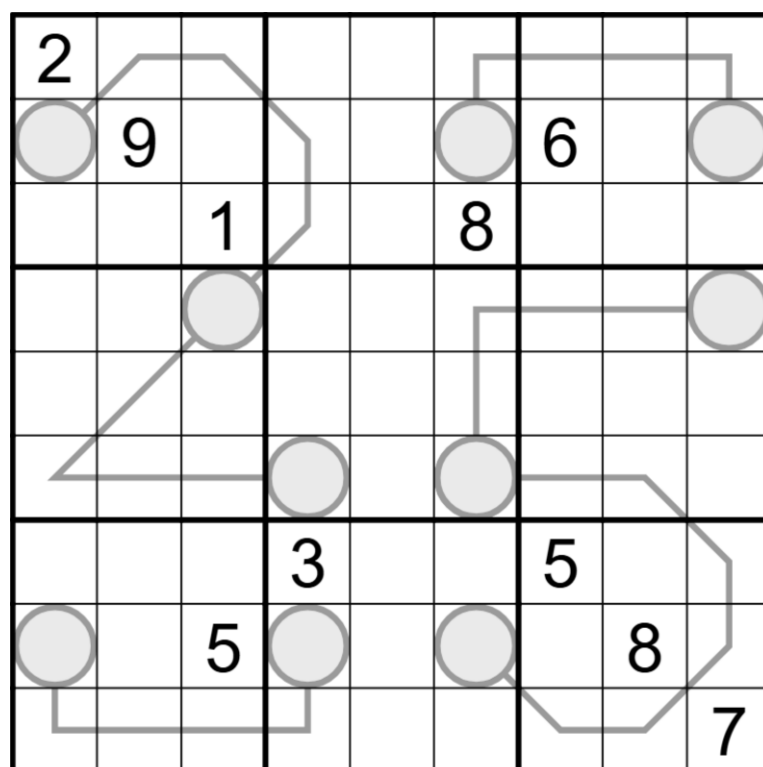
10 Between Sudoku

[74 points]

Apply classic sudoku rules. Every digit on a grey line must have a value which lies between the values of the two digits in the circles at the ends of the line. Digits may repeat on a line.

10A →

10B →



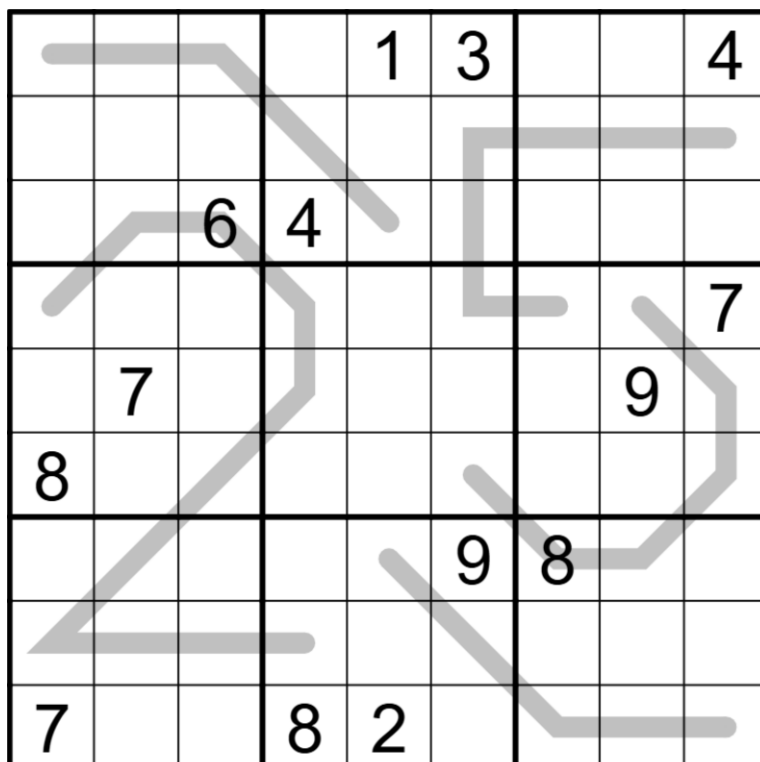
11 Palindrome Sudoku

[76 points]

Apply classic sudoku rules. Digits along any gray line form a palindrome i.e. they read the same in both directions.

11A →

11B →



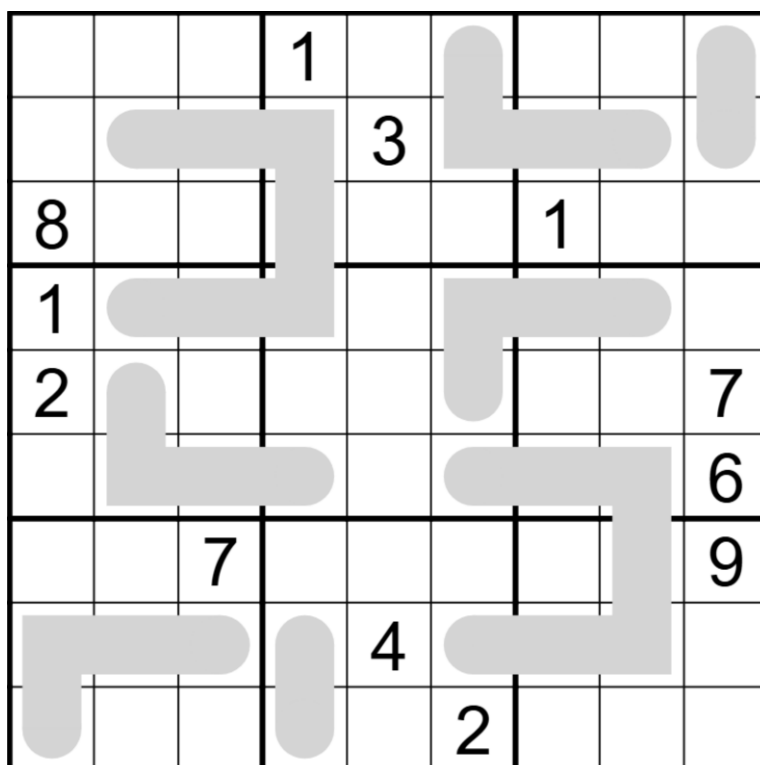
12 Cloned Shapes Sudoku

[80 points]

Apply classic sudoku rules. Each shape is cloned, including the digits it contains, without rotating and mirroring. The position of the digits inside each shape is fixed - the same digits have to be placed at the same positions inside the identical shapes. A digit may appear more than once in a shape.

12A →

12B →



13 German Whispers Sudoku**[92 points]**

Apply classic sudoku rules. Adjacent digits along each marked line have a difference of at least 5.

