

**1 Classic Sudoku****[24 points]**

Place a digit from 1-9 in each empty cell in the grid such that each row, column and marked 3x3 box contains each digit exactly once.

**1A** →**1B** →

	4			7		5		
2			1				6	
				8		7		
1					2			
	5			6			8	
			4					3
		5		3				
	3				7			9
		8		4			1	

**2 Classic Sudoku****[26 points]**

Place a digit from 1-9 in each empty cell in the grid such that each row, column and marked 3x3 box contains each digit exactly once.

**2A** →**2B** →

	3				4			
6				1			7	
		5	2			8		4
		7	3				6	
	9				8	1		
4		1			5	2		
	8			2				5
			6				3	

**3 Classic Sudoku****[30 points]**

Place a digit from 1-9 in each empty cell in the grid such that each row, column and marked 3x3 box contains each digit exactly once.

3A →

3B →

				7			6	
		8			3			9
4			2			5		
				8				7
	6						1	
3				9				
		9			5			8
5			4			3		
	7			6				

**4 Classic Sudoku****[30 points]**

Place a digit from 1-9 in each empty cell in the grid such that each row, column and marked 3x3 box contains each digit exactly once.

4A →

4B →

	1	4	5		2	8	9	
	7		9		4		3	
		8	4			3		
				1				
		2			9	4		
	3		6		5		7	
	5	9	3		7	6	4	

**5 Classic Sudoku****[52 points]**

Place a digit from 1-9 in each empty cell in the grid such that each row, column and marked 3x3 box contains each digit exactly once.

5A →

5B →

	2	8			7	9		
1				3			7	
7			4				1	
	6				8			
		5				6		
8				5			4	
4			7				9	
	1	2			6	4		

## 6 Expanded Sudoku

[25 points]

Apply classic sudoku rules. The rows and columns continue over an empty space.

6A →

					2	3					
		1				4	5				
	2		3				6	7			
		4						8	9		
									1	2	
6										3	4
4	8										5
	9	5									
		7	9						8		
			2	8				9		7	
				1	3				5		
					4	6					

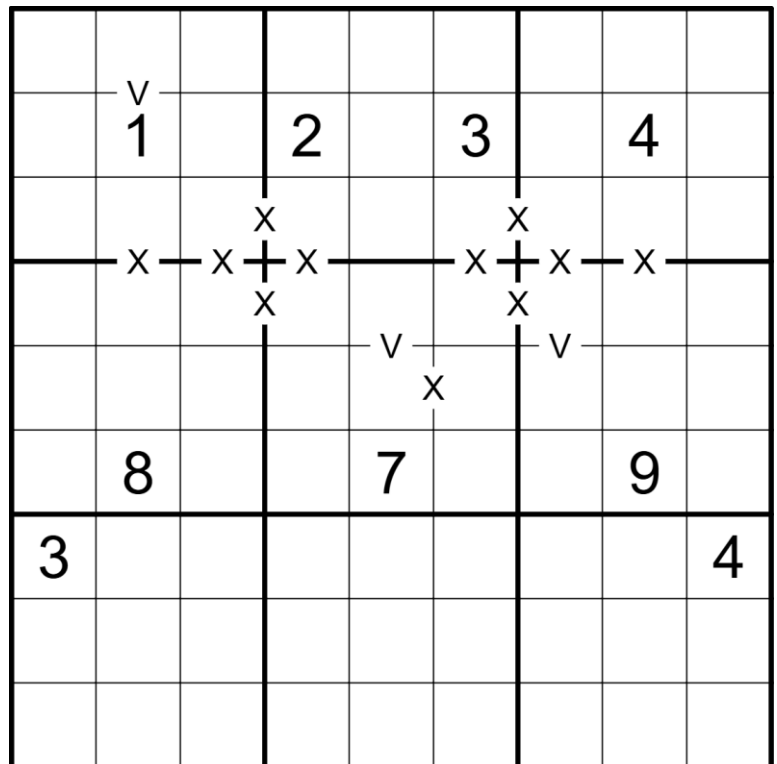
6B →

## 7 XV Sudoku

**[60 points]**

Apply classic sudoku rules. Adjacent cells containing digits summing to 5 are marked with a "V"; adjacent cells containing digits summing to 10 are marked with an "X". Adjacent cells with no marking must not contain digits summing to 5 or 10.

7A



7B

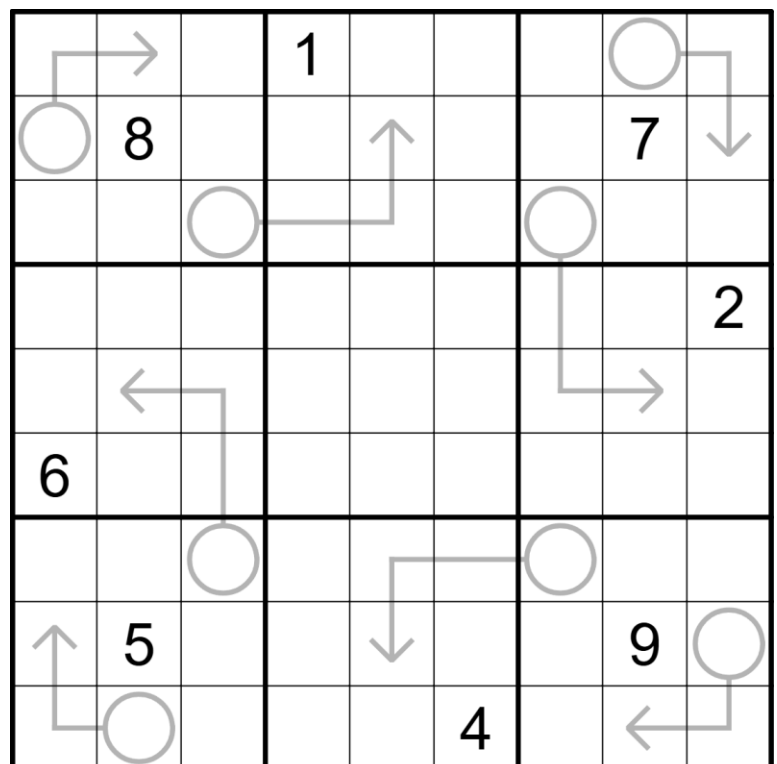


## 8 Arrow Sudoku

**[62 points]**

Apply classic sudoku rules. Each digit placed in a cell with a circle must be the sum of the digits placed in the cells that the adjoining arrow passes through. Digits may repeat on arrows.

8A



8B



## 9 Distances Sudoku

[81 points]

Apply classic sudoku rules. Clues outside the grid indicate the distance (in steps) between the digits in the corresponding row or column. Digits must be placed in order of appearance.

									2 - 4 : 6	6 - 2 : 4	4 - 2 : 2	8 - 4 : 4	2 - 4 : 4	2 - 6 : 4	4 - 8 : 2	8 - 2 : 2	4 - 6 : 8
9A →																	9 - 7 : 3
																	1 - 5 : 3
																	1 - 5 : 5
																	1 - 9 : 3
																	9 - 5 : 3
																	7 - 9 : 1
																	5 - 7 : 1
9B →																	9 - 5 : 5
																	3 - 5 : 7

### 10 Renban Sudoku

[82 points]

Apply classic sudoku rules.  
Shaded regions must  
contain a set of distinct,  
consecutive digits in any  
order.

10A →

10B →

				7				
		1						
8			1					
	4							
		7				8		
							2	
					4			7
						9		
				8				

### 11 Scattered Sudoku

[85 points]

Place a digit from 1-9 in each  
empty cell in the grid such  
that each row, column,  
marked 9-cell region and  
nine shaded cells contains  
each digit exactly once.

11A →

11B →

				3				
						8	7	
	1				9			5
2								4
3			6				2	
	4	5						
				8				

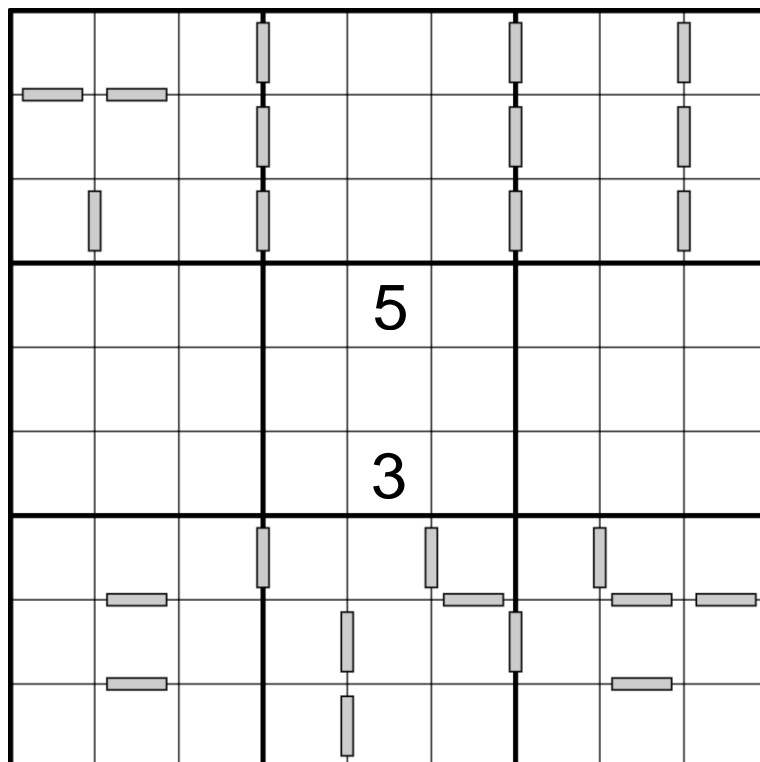
### 12 Consecutive Sudoku

[93 points]

Apply classic sudoku rules.  
In all cases where two  
neighbouring cells contain  
consecutive digits, a grey  
bar is placed between those  
cells.

12A →

12B →



### 13 Inequality Triples

**Sudoku**

[100 points]

Apply classic sudoku rules.  
For each pair of adjacent  
boxes, the inequality  
relationship between three  
pairs of numbers across the  
box boundary is the same.

13A →

13B →

5	1			9			3	2
3	2			8				9
6							4	1
8							7	6
9	6			4			5	3